

Company Profile



stairs to live

100%
MADE IN
ITALY



stairs to live

Cast Srl · 42047 Rolo (RE) Italy · Via Costituzione, 1/3
Tel. + 39 0522 665923 · Fax + 39 0522 660850 · info@castscale.it
Showroom · 42047 Rolo (RE) Italy · Via Costituzione, 1 / 3
www.caststairs.com

INDEX

- HISTORY
- MISSION
- ORGANIZATION
- ACHIEVEMENTS
 - SWING 100 - Milano
 - HELIKA LUX- New York
 - ICE BLUE - Milano Marittima
 - HELIKA INOX - Sidney
 - TEKNA VIEW - San Francisco
 - A6 - Londra
 - SWING INFINITY special steps - Milano
 - HELIKA TREND IRON - Milano
 - LINK IRON OUTDOOR - Madrid



Always been market leaders

Cast was founded in 1970 and developed its activities in the field of carpentry and stamping of ferrous materials, working for major companies in the agriculture. The subsequent development in the area of a district of ladder manufacturers led Cast to create a series of moulds for the production of iron components for ladders for local manufacturers, generally equipped only for the machining of components in wood components.

In the 1990s, the company, building on the experience gained in the sector, presented its own collection of iron spiral staircases, joined soon by other collections with wooden steps.

In 2000, the company introduced a material then new to the stairs sector: stainless steel. This gave rise to new models were born with stainless steel as the material used in the production of railings and structural modules of railings and structural modules.

A choice that anticipates the times and contributes to a process of internalisation, oriented towards the production increasingly targeted production of high-end models capable of blending technology and craftsmanship in a perfect balance and craftsmanship, in the name of a contemporary style and refined style.

Today Cast represents an important production reality, known and appreciated in Italy and abroad for having been able to transform the staircase from a functional object to a furnishing element, creating solutions that represent true symbols of excellence of Made in Italy in the world.



Innovation and technology at the service of quality

Our company boasts an important production and technological heritage, the result of targeted investments aimed primarily at achieving a high degree of quality: technology therefore at the pure service not of quantity but of quality, which has always been the primary objective of our production. Production is spread over three separate production areas occupying a total covered area of 4,000 square metres and



employing 28 highly specialised people.

The production and technological assets consist of:

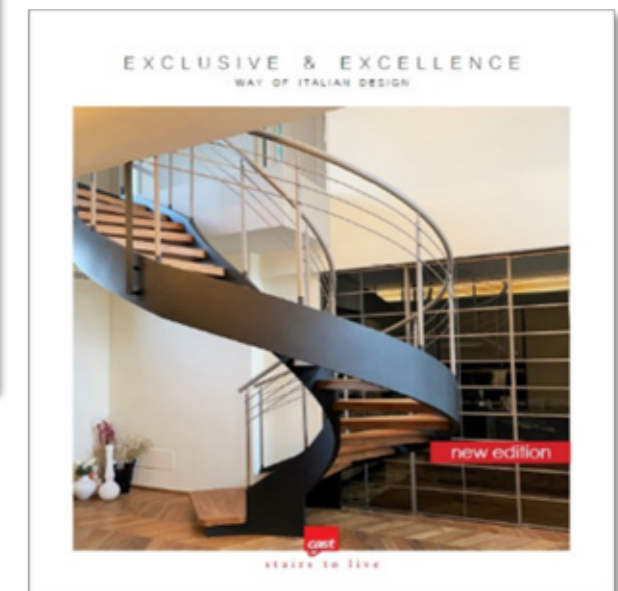
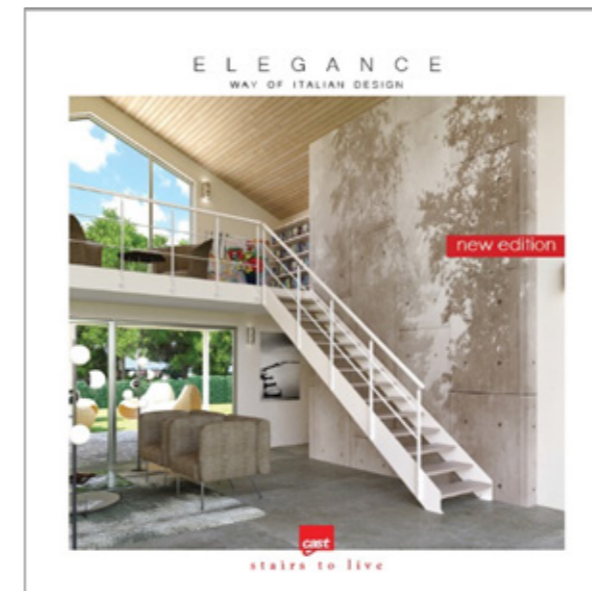
- High-tonnage mechanical and hydraulic presses.
- Laser cutter for cutting stainless steel.
- Automated robot for welding.
- Numerical control pantographs for producing wood components.
- Flat lathes for carrying out de-machining operations on stainless steel parts.
- Numerical control calenders for carrying out handrail calendaring.

The above-mentioned production and technological heritage is combined with the workforce of highly trained people to provide the added value that only expert and skilled human labour can give even at the highest level of technology.



Sales organization

The productive and versatile organization at our disposal, the constant creation of innovative, design and quality products, and the available and prepared technical and commercial organization, have enabled our sales network to achieve excellent commercial development in Italy and abroad (France, Spain, England, United States) over the last ten years.



Tools available to the customer

- Technical manuals with all the components of a model illustrated and coded for a better understanding of assembly sequences.
- Illustrated catalogues, very well maintained and able to best represent the quality and design of our products.
- Up-to-date websites linked to portals through which we receive countless enquiries that are punctually directed to our dealers.
- Promotional and advertising campaigns via the Internet.
- Complete showroom of different models to help the customer choose the material and colors.

Service available to the customer

- Technical sales staff to meet your every need: quotation requests are accompanied by dimensioned drawings, technical notes and the related economic offer. Our technicians also carry out a study of the project in order to be able to advise the customer on the best possible customised solution.
- Versatile production organization that allows us to precisely determine shipping deadlines and delivery dates.
- Our in-house production organization and efficient after-sales service allow us to promptly resolve any problems during the staircase installation phase due to any components with incorrect measurements (due to a possible measurement or production error).

Our achievements

PROJECTS

We realize the customer's project by supporting and collaborating with architects and designers to best define the functionality of the product and its aesthetic and structural characteristics. Starting from the choice of materials and the definition of the scale model, we produce plan drawings and three-dimensional renderings to allow the client to better evaluate all the characteristics of the product offered.

SERVICE

We offer the client a complete service that starts with the study and estimate of the project, offering, where required, also the service of measurement survey and installation with our specialized technicians. The measurement survey service is carried out through the use of a three-dimensional laser, which is absolutely capable of guaranteeing millimetric precision, especially in the case of surveys of helical staircases. We will therefore accompany you from the initial design to the delivery and installation of the product.

EXPERIENCE

Our experience and expertise allow us to manage and realize projects all over the world, fully meeting all customer expectations and adapting each product to local regulations. The production of our products is 100% Made in Italy and made entirely in our own factories. We combine an important production heritage with highly specialized labor: a combination of technology and craftsmanship to create unique products.

OUR WORKS

The concrete testimony of our capabilities are the projects we have realized where we will show you all the phases that make up the project, from design to realization to the final result.



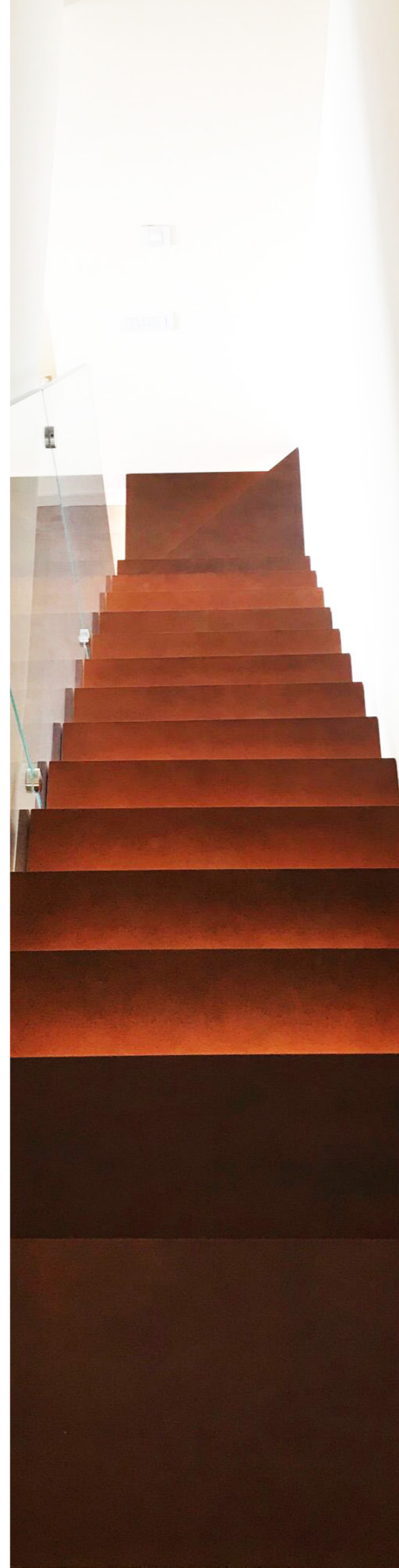
SWING 100 CORTEN STEP Milan

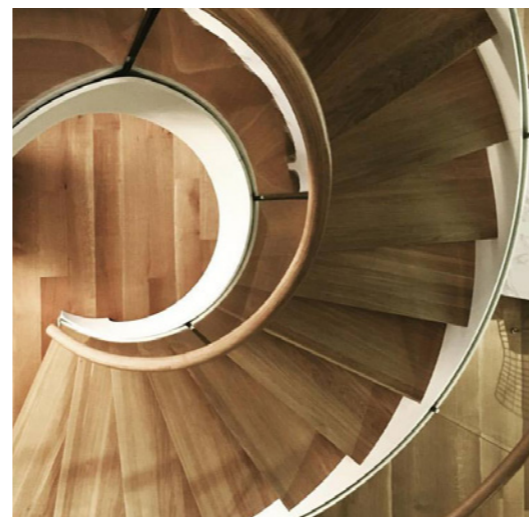
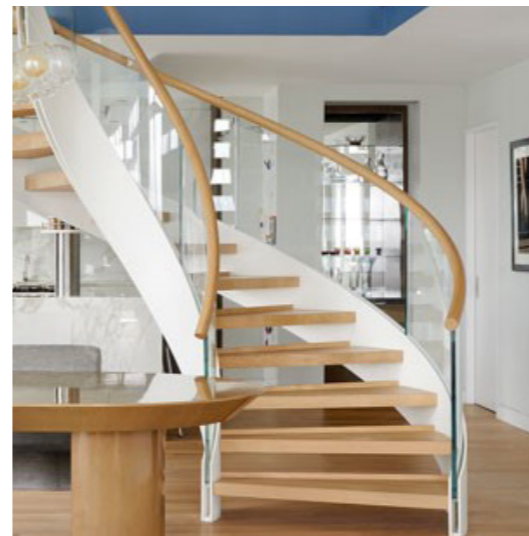
LOCATION Milan

YEAR 2021

CATEGORY Cantilever staircase

Staircase made in an apartment in Milan. The 100-mm step was painted with special corten color. The railing, on the other hand, was made with 10+10 tempered and laminated glass panels and positioned outside the step by stainless steel studs, then covered by wooden covers in the same color as the steps.





HELIKA LUX New York

ARCHITECTURAL FIRM Cortina & Käll

LOCATION Williamsburg, Brooklyn, New York

YEAR 2018

CATEGORY Helicoidal staircase

Helika Lux model located on the 20th floor of a Brooklyn skyscraper in New York City. The design started with the lateral structures and then continued with the study of finishes and materials. The staircase was made with 60 mm thick oak wood treads, brushed and painted while the iron structures were painted in the color white embossed. The railing, on the other hand, formed by tempered and laminated glass panels in extra-clear color on which a helical handrail was then placed in oak wood

ICE BLUE Milano Marittima

ARCHITECTURAL FIRM Design Studio Architettura

ARCHITECT Francesca Valzania

LOCATION Hotel Waldorf - Milano Marittima

YEAR 2018

CATEGORY Sprial staircase

Spiral staircase with glass step made inside a suite of the Waldorf Hotel in Milano Marittima. The staircase, with extra-clear glass step and stainless steel metal parts, was made with a diameter of 2,300 mm. This was only after a thorough design study and ad hoc calculation reports. There are three staircases provided, which make it possible to reach the second level of each suites in which they were laid.



HELIKA INOX

Sidney

ARCHITECTURAL FIRM MPJ Design Architects

ARCHITECT Jeremy Kruska

LOCATION Sidney - Australia

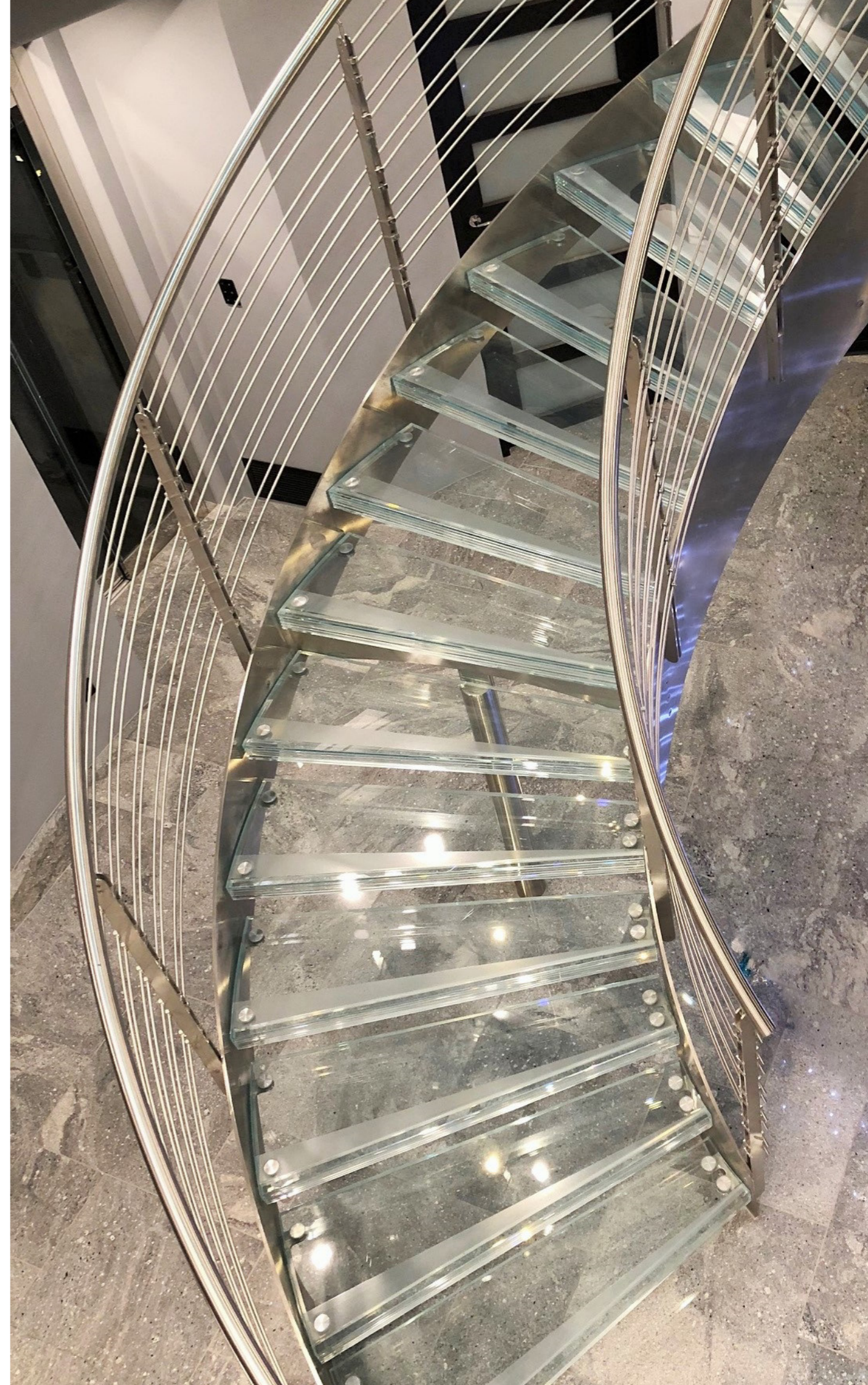
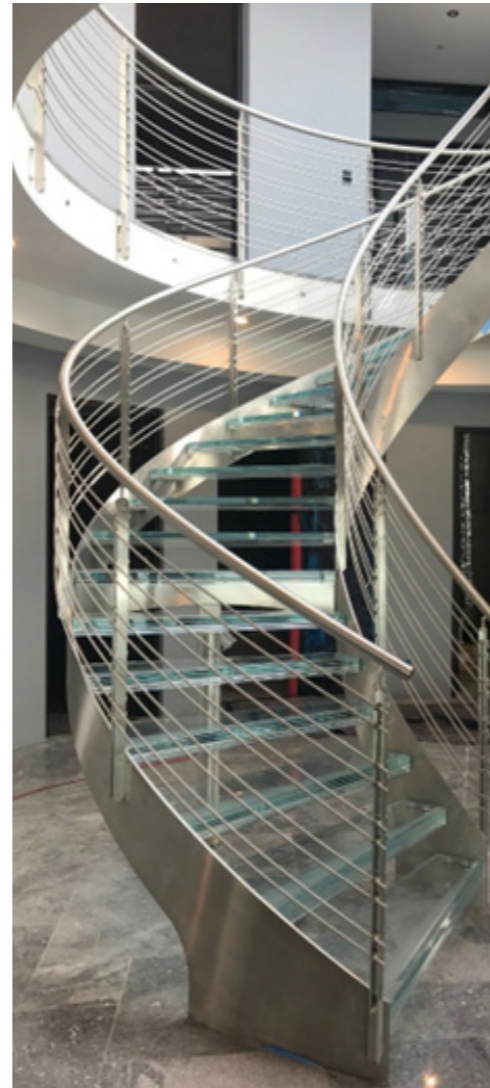
YEAR 2020

CATEGORY Scala elicoidale

Helika Inox model staircase with extra-clear glass step with stainless steel frame and railing.

In order to comply with Australian regulations regarding the riser between steps, a “special” step was designed and created by adding a shim on the front.

This was completed by a stainless steel frame and railing and a round balustrade to protect the existing hole.



TEKNA VIEW San Francisco

LOCATION San Francisco

YEAR 2019

CATEGORY Modular staircase

Modular staircase built in a villa in San Francisco with stainless steel module, wenge-stained wood step, and glass railing with stainless steel handrail.

In addition to the staircase, the linear balustrade of the same type as the railing was also designed and fabricated.



A6
Westminster Abbey -
London

LOCATION Westminster Abbey - London

YEAR 2016

CATEGORY Spiral staircase



Staircase built inside Westminster Abbey in London.

At over 7 meters in height, the staircase was made entirely of iron with non-slip perforated treads.



SWING INFINITY
special steps
Milan

LOCATION Milan

YEAR 2021

CATEGORY Cantilever staircase

Cantilever staircase made of resin and fine wood steps through collaboration with Azimut Design. Completed with a balustrade formed by glass panels attached to the steps by stainless steel studs.





HELIKA TREND IRON Milan

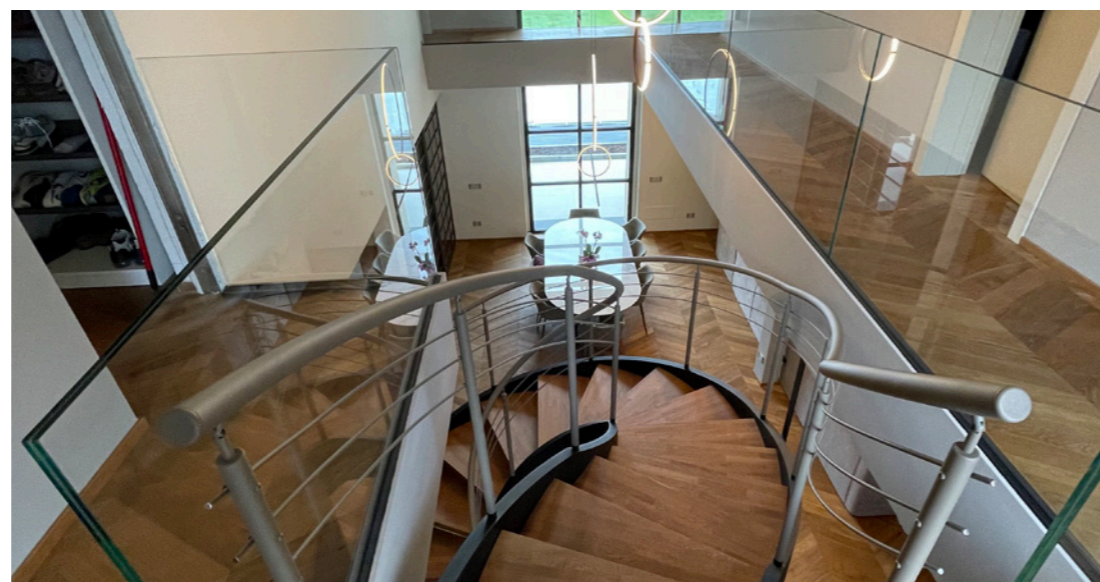
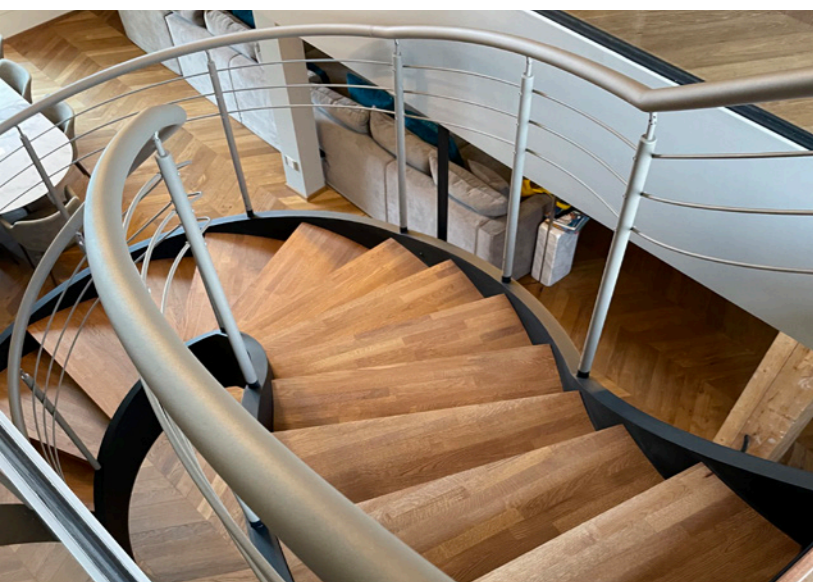
LOCATION Milan

YEAR 2021

CATEGORY Helicodal staircase

Helical model made with double boxed iron structure, iron railing and 60 mm thick oak wood step.

It is completed by a glass balustrade formed by 10+10 tempered and laminated panels fixed to the floor by aluminum profiles.





LINK IRON OUTDOOR Madrid Airport

COMMITTER SWIFT AIR

LOCATION Madrid Airport - Spain

YEAR 2020

CATEGORY Outdoor staircase

Staircase made for Swift Air airline and placed inside the Madrid airport.

The staircase is 1,300 mm wide, with iron steps with non-slip holes. In function of the important development of the staircase, stiffeners were created through the placement of support poles.



CAST SRL

42047 ROLO (RE) ITALY

via COSTITUZIONE, 1/3

tel. +39 0522 665923

email info@castscale.it

sito www.caststairs.com

